

## **USER MANUAL for Waha Home Edition:**

Provide complete protection and privacy for all sorts of your personal valued files, including documents, pictures, drawings and video clips, etc. Home Edition prevents the files, which being shared and protected, being printed, saved, copied, cut and pasted, or screen printed by other unauthorized users. For those backup files produced by testing/recording, fishing, or spying programs, it offers only sharing, but leaves no signs at all after using it. Users who want to share the files to other friends are able to share them with no worries. The operating method for Home Edition is very similar to version 3/4.

1. Enhance the protecting function of banning prints in order to share only the content of the file.
2. Once the protected file is being opened, it will then be destroyed right after using it. It could flexibly set up the file sharing time. The user could download Home Edition version at Waha, and install it in the system of Windows NT, 2000, 2003, or XP. To enjoy the service of Home Edition and Waha safe server, all you have to do is to restart the computer after the installation, then complete the online payment registration.

To instantly open the files which being protected by Home Edition, download Waha Player or double-click on the installed Home Edition.

To use Home Edition to share the file, the protecting time period could be set up flexibly, and it's only for one-time use; it will then be destroyed when the time is up or the file is closed.

### **System Requirement**

CPU:PIII-500, RAM: 128M, HD: 2G or higher

O.S/ SUPPORT: Win2000/XP/2003Server/NT

### **Download:**

You can download the software online at <http://www.waha.com/download/setupWHome.zip>.

### **Installation:**



Installation program

- To install simply run setupWHome.exe, and restart the computer when setup to be completed in several minutes.

## Waha Security --- Total Security On Demand

Attention: if not connected to Internet or network error, users will see the warning as no color interface. Please check the network configuration or contact with ISP to solve the problem.


### Usage:



WahaHome starting interface

### Register a new account:

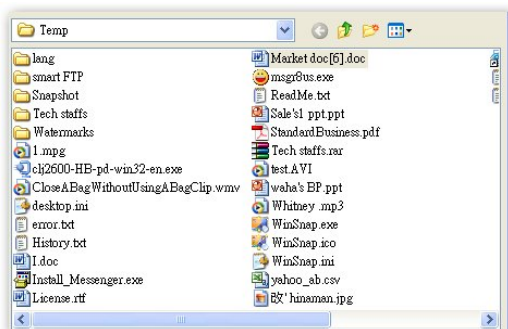
### login account:

- To run the software by clicking short cut icon on desktop  or "Windows' start menu" in Start -> Program -> WahaSecurity-> WahaHome->File Numen.exe.

- If it is the first time using the software, user may pay and register a new account first.
- users can simply start to pack security file by login the account after register.



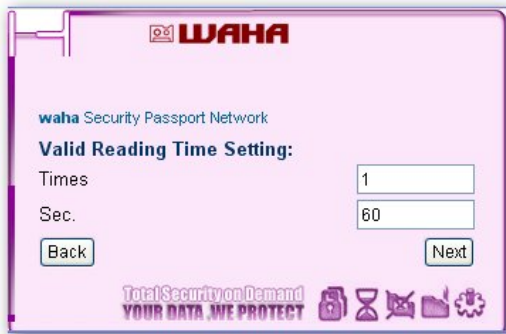
- Select a file which needs to protect.
- Follow the steps to pack a file.



- This step, Waha's program will pop-up file selection window by press "select" button. Users can select any file to protect with no restriction .Press "next" to continue.
- Follow the steps to pack a file.



- Press "next" button to continue.



- Set the valid date of reading the file. Users can set how long can be read (unit: second) before expiration by rule setting. Press "next" button to continue. Waha's program won't open the secured file exceeding rule set.

### Rule of valid reading time



- We may change the file's name and directory to build the protection file.
- The default name and path just showing on interface.
- Press "select" button for change output security file and select favorite directory.



- Once highlight the favorite directory and press confirm button to next.



- Press "Packing" button to generate security file.



- After packing completed by 100% , users may press "Continuing" button to continue or close the window to exit program.



- Get the Waha security Home file and share to someone. (Ps. That whom wants to read this file, please have he or she installs the same program as you have.)

<http://www.waha.com/download/setupWHome.zip>.

### Open File:

To open Waha security Home file, the end user's computer needs to install WahaHome Edition.

<http://www.waha.com/download/setupWHome.zip>.



- Use mouse and double click on .whs file icon, WahaHome will pop-up reader license. Press "Agree" button to agree reading agreement.

## Waha Security --- Total Security On Demand



- And, then program displays the rule for this reading time.
- After press "Next" button, WahaHome will open the file and protect it at run-time.



- When user finishes to read, WahaHome will shows "View Finished" in program's interface.

### www.waha.com Corporation

1707 E. Greenville Dr. West Covina, Ca 91791

Email: [info@waha.com](mailto:info@waha.com)

<http://www.waha.com>

Copyright © 2007 Waha Inc. All rights reserved. Copyright/IP Policy

Thank you for using WahaHome.Edition !!